

MEASURING THE READINESS OF SLAUGHTERHOUSES AS A STRATEGIC UPSTREAM STRENGTHENING HALAL CERTIFICATION IN EAST JAVA

Hikmatul Hasanah

Faculty of Islamic Economics and Business, Kiai Haji Achmad Siddiq State Islamic University Jember

Email: hikmahhasanah@uinkhas.ac.id

Siti Alfiyah

Faculty of Islamic Economics and Business, Kiai Haji Achmad Siddiq State Islamic University Jember

Email: alfiahmelani28@gmail.com

Moh Ali Syaifudin Zuhri

Sharia Faculty, Kiai Haji Achmad Siddiq State Islamic University Jember

Email: alizuhri@gmail.com

Roni Subhan

Faculty of Islamic Economics and Business, Kiai Haji Achmad Siddiq State Islamic University Jember

Email: ronisubhan@uinkhas.ac.id

Abstract

East Java as a national food center must receive serious attention regarding the existence of slaughterhouses that meet halal and hygiene standards. If the RPH as an upstream halal product can be improved, then the downstream area will be greatly helped in realizing a product ready for consumption and use. And ultimately, halal certification for processed meat food products will be achieved faster and better. Based on field phenomena, there are still many processed meat food products that do not yet have halal certification, this is where the upstream slaughterhouse war becomes very urgent. From research using a qualitative approach and this type of library research (Library Research), data was obtained from previous research, news portals, and websites that provide information about the readiness of RPH as a strategic upstream for strengthening halal certification in East Java, which then resulted in the conclusion that the readiness of RPH in East Java is still relatively low. Hence, there is a need for synergistic cooperation between the relevant parties, namely: the community, SMEs, RPH, and government.

Keywords: RPH, Halal, Halal Certification.

Abstrak

Jawa Timur sebagai sentra pangan nasional harus mendapat perhatian serius mengenai keberadaan RPH yang memenuhi standart halal dan higienitas. Jika RPH sebagai hulu produk halal sudah bisa dibenahi, maka wilayah hilirnya akan sangat terbantu mewujudkan sebuah produk yang siap untuk di konsumsi dan siap pakai. Dan pada akhirnya sertifikasi halal pada

produk olahan makanan daging akan terwujud lebih cepat dan lebih baik. Berdasarkan fenomena lapangan masih banyak produk pangan olahan daging yang belum mengantongi sertifikasi halal, dari sinilah perang RPH sebagai hulu menjadi sangat urgen. Dari penelitian dengan pendekatan kualitatif dan jenis penelitian kepustakaan (Library Research) ini, diperoleh data dari penelitian terdahulu, portal berita maupun website yang memberikan info tentang kesiapan RPH sebagai hulu strategis penguatan sertifikasi halal di Jawa Timur, selanjutnya menghasilkan kesimpulan bahwa kesiapan RPH di Jawa Timur masih relatif rendah, sehingga perlu adanya kerjasama yang sinergis antara pihak-pihak terkait yaitu: masyarakat, pelaku IKM, RPH dan pemerintah.

Kata Kunci: *RPH, Halal, Sertifikasi Halal.*

Introduction

The reality currently happening is that slaughterhouses (RPH) in East Java are not yet fully halal certified, there are only a few data on slaughterhouses that have halal certificates, of course, this is an obstacle to the success of the 2024 target for all SMEs with certified meat processing products. halal, especially in East Java. Therefore, measuring the readiness of slaughterhouses as a strategic upstream source for strengthening halal certification in East Java is important and must be done.

In 2019, the Central Statistics Agency (BPS) noted that there were 1331 RPHs spread throughout Indonesia, while according to LPPOM MUI in 2021, there were only 198 RPHs that were certified halal or only 14.9% of RPHs in Indonesia had guaranteed halal meat production processes. (Tim Penyusun, 2022) Of the 1331 RPHs spread throughout Indonesia, the largest number is occupied by East Java with 202 RPHs, including chicken and poultry slaughtering. However, the East Java Livestock Service recorded a total of 126 ruminant slaughterhouses in East Java, two of which were pig slaughterhouses, bringing the total to 124 RPHs. (*Dinas Peternakan Provinsi Jawa Timur*, n.d.) According to data from LPPOM MUI East Java in 2019, 23 RPH were certified halal. (*Anwar - Respon Pelaku Usaha RPA Terhadap Sertifikasi Halal.Pdf*, n.d.) So only around 19.3% have a halal certificate.

East Java as a national food center must receive serious attention regarding the existence of slaughterhouses that meet halal and hygiene standards. If the RPH as an upstream halal product can be improved, then the downstream area will be greatly helped in realizing a product ready for consumption and use. And ultimately, halal certification for processed meat food products will be achieved faster and

better.(Agency, n.d.-a) If all East Java slaughterhouses are not immediately certified halal, it will hamper the certification process in downstream areas, namely Small and Medium Industries (IKM) which operate in processed meat food products.

The halal certification process carried out by LPPOM MUI East Java Province still shows relatively the same increase, both those applying for regular certification and IKM halal certification facilitated by the government:

Table 1. Application for Halal Certification Based on Regular and IKM

Year	Number of Certificates Halal			Number of Products			Number of Companies		
	Reg Es	SM Es	Total	Reg Es	SMEs	Total	Reg Es	SM Es	Total
2014	376	275	651	5897	1496	7393	292	274	566
2015	496	389	885	8348	2033	10381	317	373	690
2016	589	343	932	22686	2011	24697	461	331	792
2017	548	431	979	13061	2930	15991	444	420	864
2018	625	742	1367	13329	4349	17678	515	727	1242
2019	645	1187	1832	19763	7457	27220	540	115	1692
2020 (sd March 2020)	82	74	156	2067	722	2789	72	63	135
TOTAL	4226	3765	7991	10714	2250	12965	3410	365	7068

Source: LPPOM MUI East Java, 2020

This research aims to encourage slaughterhouses in East Java to process their halal certificates and so that the acceleration of the halal certification process for SMEs engaged in processed meat food products can be realized immediately, and will further contribute to the mandate of Law Number 33 of 2014 concerning guaranteed halal products. It is targeted that by 2024 all SMEs will be halal certified.

This research is not something new, but many have discussed it in dialogue and research, including the virtual and face-to-face dialogue held by the East Java Halal Center "Dialogue on RPH/RPU Readiness as a Strategic Upstream Strengthening Halal Certification" on April 25, 2022.(Agency, n.d.-a) Muhammad Sayuti et al's research entitled "Implementation of Halal Logistics in Beef Distribution in Karawang Regency".(Sayuti et al., 2021) Mohd Hafiz Zulfikar et al's research entitled

"Institutional Forces on Australian Halal Meat Supply Chain (AHMSC) Operations".(Zulfakar et al., 2018) However, research is now being expanded by measuring the readiness of East Java slaughterhouses not only in terms of logistics but also managers, slaughtermen, and support from related officials.

This research aims to explore the condition of East Java slaughterhouses in East Java regarding their readiness to strengthen halal certification in East Java to meet the implementation of mandatory halal certification on all products in October 2024. It is hoped that this research can contribute information to local governments so that they can fully support all East Java slaughterhouses to process halal certification immediately. Likewise, it will be very beneficial for MSMEs that produce from slaughtered materials, it will be easier to process halal certification if all slaughterhouses are halal certified.

Literature Review

Slaughterhouse (RPH)

A slaughterhouse (RPH) is a building or complex of buildings with certain designs and conditions that is used as a place for slaughtering/slaughtering animals to produce meat for consumption by the general public. RPH's obligations that must be fulfilled in carrying out its activities are technical requirements, service quality, and environmental impacts.

Preparing a slaughterhouse that meets halal requirements will help SMEs and other production units whose main source of ingredients is the food of animal origin. Implementing a halal management system at the slaughterhouse will ensure that the entire production process follows halal standards set by the regulator. The enactment of Minister of Religion Decree No. 748 of 2021 concerning Types of Products that Must Be Halal Certified on January 1 2022 further strengthens that halal slaughterhouses need to be prioritized. Because food products are the type of product that gets the earliest priority to be certified halal. So the slaughterhouse has an important role as the starting point in the process of halal food from animals or meat. Halal is not only applied to slaughterhouses but must also be applied to the transportation and display processes at

sales places, namely meat stalls and markets. Why is this important, many slaughterhouse products are found to meet halal and thoyib aspects, but at sales locations, illegal practices can still be found, for example, beef mixed with pork or beef smeared with blood so that the meat product looks still fresh. This is a concern that must be anticipated by all stakeholders. *(Buku Modernisasi RPH Halal.Pdf, n.d.)*

RPH institutions are divided into 3 (three) types based on management patterns, including:

1. Type I RPH is a regional government-owned RPH that is managed by the regional government and serves as a public service.
2. Type II RPH is a privately owned RPH that is managed alone or in collaboration with another private sector.
3. Type II RPH is an RPH owned by the regional government which is jointly managed by the regional government and the private sector.

Table 2. Number of RPH/TPH by Region

Number	Province	Number of RPH/TPH
1	Java	604
2	Sumatra	343
3	Sulawesi	259
4	Bali & Nusa Tenggara	171
5	Kalimantan	162
6	Maluku & Papua	105

Source: *(Ada 1.644 Rumah Pemotongan Hewan di Indonesia pada 2022, Ini Sebaran Wilayahnya / Databoks, n.d.)*

Halal Certification

A halal certificate is a certificate issued by the Halal Product Guarantee Organizing Agency (BPJPH) regarding the halalness of the products produced by the company. The functions of halal certificates for consumers include:

1. Protecting Muslim consumers from consuming non-halal food.
2. Provides peace of mind because of consuming halal food.
3. Protect your body and soul from harm caused by haram products.
4. Providing legal certainty and protection for consumers.

The functions of halal certificates for producers include:

1. As a producer's responsibility to Muslim consumers, remember that halal is part of the Shari'a and Muslim principles of life.
2. Increase trust and satisfaction for consumers.
3. Improve the company's image and competitiveness.
4. As a marketing instrument and to expand the marketing network area.
5. Provide benefits to producers by increasing competitiveness and production turnover and sales.

The implementation of halal product certificates not only applies to domestic goods but also foreign products entering and circulating in Indonesia. Foreign products can be accepted if they bring a halal certificate from their country of origin or are checked again by LPPOM MUI. The institutions involved in the halal certification process include BPJPH from the Ministry of Religion, Badan POM, MUI Fatwa Commission, and LPPOM MUI which is part of KHI. (Masruroh & Shahrin, 2022)

The mechanism for applying for halal certification is based on the Halal Product Guarantee Law No. 33 of 2014, which is as follows:

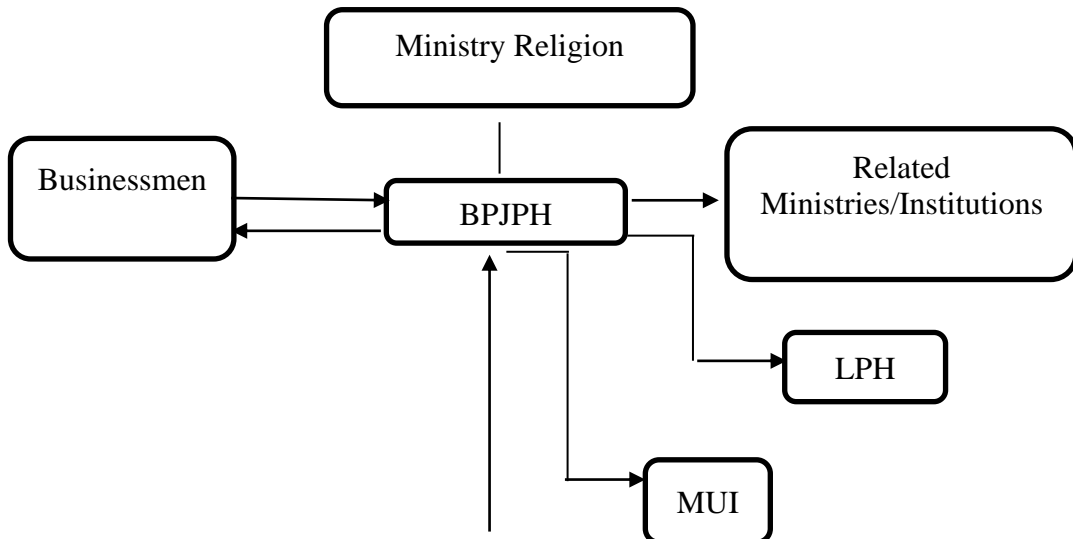
1. The application for halal certification is submitted by the business actor in writing to BPJPH accompanied by complete documents starting from the business actor's data, name and type of product, list of products and materials used, as well as the processing process.
2. Product halal testing. BPJPH has established a halal inspection institution (LPH) containing a minimum of 3 auditors.

3. Product halal testing at the business location during the production process by a halal auditor, if there are ingredients whose halalness is doubtful, the test can be carried out in the laboratory.
4. The results of product halal testing by LPH are submitted to BPJPH.
5. BPJPH submits the results of product halal testing inspections to the Indonesian Ulema Council (MUI) to obtain a halal determination.
6. Determining halal through a fatwa trial by the MUI. Determination of product halalness no later than 30 working days after receipt of product inspection and testing results from BPJPH.
7. The MUI submits the decision to determine whether a product is halal to BPJPH as a basis for issuing a halal certificate no later than 7 working days from the MUI's decision to halal the product. However, if the product is declared not halal, BPJPH will return the application for halal certification to the business actor accompanied by reasons.

Certificates issued by BPJPH are valid for 4 years from the time BPJPH issues them and must be extended by business actors by submitting a renewal of the halal certificate no later than 3 months before the validity period of the halal certificate takes effect. (KOMINFO, n.d.)

The following is a picture of the halal certification process flow;

Figure 1. Halal Certification Process Flow (*Badan Penyelenggara Jaminan Produk Halal*, n.d.)



The implementation of halal certification for food began on October 17, 2019, bringing a change in strategy in carrying out halal certification. Also supported by the presence of the Job Creation Law No. 11 of 2020 and PP No. 39 of 2021 mandate the obligation to be halal certified for MSEs that meet certain requirements based on a statement by the MSE actor (self-declare) BPJPH sets its standards. Therefore, it is necessary to assist with the Halal Product Process (PPH). This assistance can be provided by Islamic Religious Organizations/Institutions, universities, and government institutions. In this self-declare program, MSMEs can obtain halal certification for free.(Masruroh & Shahrin, 2022)

Strengthening the Halal Value Chain at RPH

Strengthening the halal value chain is one of the strategies in the Indonesian Sharia Economic Master plan to make Indonesia the center of the Sharia economy in the world. In the food and beverage sector, there is one important sector that is upstream in the halal value chain in Indonesia, namely the meat product supply sector. Because this meat product has a very high risk of being unhal. According to the Halal Assurance System (HAS) 23000 standard, meat is one of the critical ingredients or ingredients that have a high probability of having an unhalal status, so halal certification is needed to guarantee the halal status of the ingredient. The halalness of meat is influenced by the slaughtering procedures and the handling of the product after the slaughtering process until the product reaches the consumer. The requirement for halal guarantees is by the mandate of Law no. 33 of 2014 concerning halal product guarantees, apart from that meat products must also be ASUH (safe, healthy, whole, and halal) by Law no. 18 of 2009 Juncto Law no. 41 of 2014 concerning Animal Husbandry and Animal Health.(Tim Penyusun, 2022)

East Java, with the highest number of slaughterhouses in Indonesia, should pay attention to halal and tayyib in East Java slaughterhouse products, one of the things that makes meat halal is the slaughtering process, in Achmad Rosidi's research entitled "The lack of halal slaughterers in the city of Surabaya, East Java" concluded that the

competence of slaughtermen who meet the standards set by the government is still very minimal. The existence of the Halal Slaughterers Association (JULEHA), will help the community in realizing halal meat consumption. As for the factors that influence the competence of slaughtermen (not yet halal certified), especially those in slaughterhouses and traditional markets in Surabaya City, the motive is economic income, not yet based on the guarantee of Safe, Healthy, Whole, and Halal (ASUH) quality for consumption meat. Meanwhile, halal slaughterers have various work backgrounds, they become slaughterers because they are aware of being able to ensure that the meat consumed by the public is truly halal. To meet JULEHA's needs, the regional government (City and Province) collaborates with the Ministry of Religion and the MUI to organize training involving slaughtermen throughout East Java. (Mulyono, n.d.)

To implement halal logistics in an orderly manner slaughterhouse logistics, measurable monitoring is needed, as in research conducted by Muhammad Sayuti et al "Implementation of Halal Logistics in Beef Distribution in Karawang Regency" (Sayuti et al., 2021) produces a checklist that is used as a standard that must be applied in slaughterhouses.

Slaughterhouses as meat suppliers must fulfill the halal status of their products, apart from being a quality standard, public awareness of halal products is also increasing. The choice to consume halal meat is not only in Muslim-majority communities. The research entitled "Determinants of Halal Consumption in Germany" (Sherwani et al., 2018) found that the determining factor for the consumption of halal meat in Germany is a positive personal attitude towards consuming halal meat and complying with the recommendations of religious and government orders.

About ensuring the halal meat supply chain, it is not only the slaughterhouse that must be required to maintain it but support is needed from policymakers as stated in the regulations. In research entitled "Institutional Forces on Australian Halal Meat Supply Chain (AHMSC) Operations" (Zulfakar et al., 2018) stated that the institutional forces governing the halal meat supply chain in Australia have a very important role in ensuring the protection of halal status in the halal meat supply chain.

Research Methods

This research uses a qualitative approach because it collects data to describe the phenomena that occur, where the researcher is the key instrument.(Albi Anggito, Johan Setiawan, 2018) This type of research is library research (Library Research) in which the researcher deals directly with text or numerical data, text can be in the form of books or articles and documents.(Mestika Zed, 2008) The step in this library research is to collect library sources, both primary and secondary. Once collected, the library sources are categorized according to the research questions, and then the researcher collects data from library sources. These data are presented as research findings. The data that has been displayed is then abstracted to display facts and then these facts are interpreted to produce information or knowledge.(Wahyudin Darmalaksana, 2020)

In this research, data taken from books or articles and documents is data about the development of abattoirs in East Java related to efforts to make abattoirs halal and tayyib, then the facts can be presented which are interpreted to produce information and knowledge about the readiness of halal abattoirs in East Java.

Results and Discussion

In 2019, the East Java Provincial Government together with the East Java Province Bank Indonesia Representative Office plan to develop a halal chain in East Java. Especially for chicken, poultry, and cattle slaughterhouses, with plans to improve the process of slaughtering or slaughtering animals in a halal and clean manner. This step was taken to develop sharia economics in East Java. In the initial stage, Malang was chosen, because considering it as a creative city, it also has a halal center at Brawijaya University (UB) which provides opportunities to collaborate with academics there.(*Pemprov Jatim Gagasan Rumah Potong Hewan Halal*, n.d.)

2020 is the peak of the COVID-19 pandemic, where the spread of the delta variant of the coronavirus is said to have started in India and spread to various countries including Indonesia. The situation was very tense at that time because, with the increasing number of victims who died every day, the situation in every sector was affected so that activities that brought crowds were all canceled. This has caused a

vacuum in several activities, including activities to strengthen halal certification at slaughterhouses in East Java.

In 2021, KNEKS discussed the weakness of the value chain in the Indonesian halal industry as one of the obstacles faced. Therefore, it is necessary to describe a map of opportunities and challenges in the industry. Food and beverages have the greatest economic value, and an important upstream part of the halal value chain in Indonesia is the meat product supply sector. According to the HAS 23000 standard, meat is a critical ingredient or an ingredient that has a high possibility of non-halal status so it needs a halal certificate as a guarantee.

Halal meat can be detected by the type of animal, the slaughter procedures, and how the product is handled after slaughter until the product is in the hands of consumers. Trust Law no. 33 of 2014 concerning Halal Product Guarantees requires that meat products be guaranteed to be halal and ensure that meat products are ASUH (safe, healthy, whole, and halal) produced from slaughterhouses by Law no. 18 of 2009 and Law no. 41 of 2014 concerning Animal Husbandry and Animal Health.

Implementation of Minister of Religion Decree No. 748 concerning Types of Products that Must Be Halal Certified increasingly shows that the existence of halal slaughterhouses is very important and quite critical. Because food is a type of product that has priority for halal certification, in this case, the slaughterhouse plays an important role as the starting point for a series of processes that produce halal food originating from animals. Apart from being halal, slaughterhouse products must also be ASUH.

Halal does not only stop at the slaughterhouse, but halal must also be implemented during the distribution, storage, and sales processes, of course, the role here is the meat stalls in shops, malls, and traditional markets. In this case, the National Committee for Sharia Economics and Finance (KNEKS) has an initiative regarding the modernization of Halal RPH as an effort to accelerate the guarantee of halal products in Indonesia. The modernization of slaughterhouses aims to improve upstream supply chain infrastructure which will better guarantee the halal status of a product and its halal status can be traced along the supply chain of meat raw materials used for the development of industries that use local meat. Modernization of slaughterhouses can be

realized if there are adequate facilities, a layout that facilitates the flow of the slaughtering process, competent human resources including monitoring and evaluation staff as well as policy tools and government regulations.

The importance of the halal slaughterhouse modernization program is because we see that the condition of slaughterhouses in Indonesia still needs improvement in terms of facilities, resources, and governance. Even though there are already slaughterhouses that have utilized technology in their production processes and have obtained halal certification and a Veterinary Control Number (NKV) from the Livestock Service as halal and hygienic controls so that the quality and balance of availability of basic ingredients is maintained. With the modernization of the halal slaughterhouse, it is hoped that it can encourage the implementation of a halal traceability system thereby providing added value to halal meat products. (*Modernisasi Rumah Pemotongan Hewan (RPH) Halal Di Indonesia*, n.d.)

In 2022, research conducted by Izzah Illiyyina and Arimurti Kriswibowo explained that the response of Small and Medium Industries (IKM) to cognitive indicators (knowledge) is that SMEs are quite good at knowing the contents of the current halal certification policy, but this happens because of the policy. It is mandatory to be halal so they inevitably have to know and pay more attention to halal certification policies. Likewise, other respondents have high knowledge, which shows that the halal certification policy has been well conveyed to the community. However, the public's pros and cons regarding the halal certification policy still occur. So it is a separate evaluation for the government, especially since there are still a few SMEs who are proactive in this policy. Good policy but there is still a lack of community participation, so the policy cannot be implemented well either. (Illiyina & Kriswibowo, 2022)

The lack of response from IKMs to halal certification policies, especially IKMs for processed meat products, will automatically affect the halal commitment of slaughterhouses because even though slaughterhouses do not implement halal certification policies, the demand for meat by IKMs is still large.

The following is data on slaughterhouses in East Java, both those that have been halal certified and those that have not been halal certified:

Table 3. RPH data in East Java

No	Regency/City	Name of RPH	Address	Type of livestock slaughtered*)			
				Cow/Buffalo	Goat/Sheep	Pig	Poultry
-1	-2	-3	-4	-5	-6	-7	-8
1	Pacitan	RPH Pacitan	Ds. Semanten Kec Pacitan Kab.Pacitan	v			
2	Ponorogo	RPH Ponorogo	Jl. Sulawesi, Ponorogo	v			
		RPH RJB	Ds. Pijeran Kec. Siman				
3	Trenggalek						
4	Tulungagung	RPH Kraton	Ds. Ketanon Kec.Kedungwaru	v			
		RPH Ngunut	Ds. Kaliwungu, Kec. Ngunut	v			
		RPH Suwaru	Ds. Suwaru, Kec. Bandung	v			
		RPH Ngujangan	Ds. Ngujangan, Kec. Kedungwaru			v	
5	Kota Blitar	RPH Dimoro	Jl. Batanghari No.5	v			
	Blitar	RPH Sregat	Kel. Kauman Kec. Sregat	v	v		
		RPH Kademangan	Kel. Kademangan, Kec. Kademangan	v	v		
		RPH Talun	Kel. Talun, Kec. Talun	v	v		
		RPH Wlingi	Kel. Babadan, Kec. Wlingi	v	v		
		RPH Kesamben	Ds. Kesamben Kec. Kesamben	v	v		
6	Kediri	RPH Pare	Jl. A.Yani 59 Ds. Tulungrejo, Kec. Pare	v			
	Kota Kediri	RPH Kota Kediri	Jl. Lawo Pojok Kec. Mojoroto Kota Kediri	v			
		RPH Wates	Jl. Raya Pare - Wates No. 57 Ds. Tawang Kec. Wates	v			
7	Malang	RPH Lawang	Kec. Lawang	v			
		RPH Singosari	Kec. Singosari	v			
		RPH Pujon	Kec. Pujon	v			
		RPH Tumpang	Kec. Tumpang	v			
		RPH Wajak	Kec. Wajak	v			
		RPH Kepanjen	Kec. Kepanjen	v			
		RPH Turen	Kec. Turen	v			
		RPH Bululawang	Kec. Bululawang	v			
	Kota Malang	RPH Gadang dan Sukun	Jl. Kol. Sugiono 176 Malang	v			
8	Lumajang	RPH Lumajang	Jl. Juanda Kec. Lumajang	v	v		
		RPH Jatiroto	Jl. Pasar Jatiroto Desa Jatiroto	v			
		RPH Tempel	Jl. Raya Tempel	v			
		RPH Pasirian	Desa Pasirian Kec. Pasirian	v			
		RPH Klakah	Jl. Raya Klakah	v	v		
		RPH Yosowilangun	Desa Yosowilangun Kec. Yosowilangun	v			
		RPH Candipuro	Desa Candipuro Kec. Candipuro	v			
9	Jember	RPH Kaliwates	Kel. Jember Kidul Kec. Kaliwates	v			
		RPH Kaliwates	Kec. Kaliwates			v	
		RPH	Kel. Wirolegi Kec.	v			

		Sumbersari	Sumbersari				
		RPH Mayang	Desa Mayang Kec. Mayang	v			
		RPH Silo	Desa Sempolan	v			
		RPH Sukowono	Desa Sukowono	v			
		RPH Kalisat	Desa Kalisat	v			
		RPH Rambipuji	Kec. Rambipuji	v			
		RPH Bangsalsari	Kec. Bangsalsari	v			
		RPH Tanggul	Kec. Tanggul	v			
		RPH Balung	Desa Balung Lor Kec. Balung	v			
		RPH Ambulu	Kec. Ambulu	v			
10	Banyuwangi	RPH Banyuwangi	Kec. Banyuwangi	v	v		
		RPH Rogojampi	Kec. Rogojampi	v			
		RPH Kalibaru	Kec. Kalibaru	v			
		RPH Glenmore	Kec. Glenmore	v			
11	Bondowoso	RPH Maesan	Kec. Maesan	v			
		RPH Bondowoso	Kec. Bondowoso	v			
		RPH Prajekan	Kec. Prajekan	v			
		RPH Wonosari	Kec. Wonosari	v			
12	Situbondo	RPH Besuki	Kec. Besuki	v			
		RPH Situbondo	Kec. Situbondo	v			
		RPH Asem Bagus	Ds. Perante RT.1 RW.2 Kec. Asem Bagus	v			
13	Probolinggo	RPH Banyuanyar	Ds. Leprak Kulon, Kec. Banyuanyar	v			
		RPH Maron	Ds. Maron Kidul, Kec. Maron	v			
		RPH Krejengan	Ds. Sentong, Kec. Krejengan	v			
		RPH Gading	Ds. Wangkal, Kec. Banyuanyar	v			
		RPH Besuk	Ds. Besuk, Kec. Besuk	v			
		RPH Leces	Ds. Sumberkedawung, Kec. Leces	v			
	Kota Probolinggo	RPH Kota Probolinggo	Jl. A. Yani No. 35 Kel. Mangunharjo	v			
14	Pasuruan	RPH Bajangan	Jl. Raya Bajangan Gd. Wetan	v	v		
		RPH Pasrepan	Pasar Pasrepan Ds. Pasrepan	v	v		
		RPH Nguling	Depan, Kec. Nguling	v	v		
		RPH Bangil	Kidul Dalem, Bangil	v	v		
		RPH Gempol	Desa Gempol, Kec. Gempol	v	v		
		RPH Prigen	Raya Prigen, Depan Kec. Prigen	v	v		
		RPH Sukorejo	Jl. Pasar Sukorejo	v	v		
	Kota Pasuruan	RPH Kota Pasuruan	Jl. Ir. H. Juanda No. 1	v			
15	Sidoarjo	RPH Krian	Krian	v			
16	Mojokerto	RPH Gedang	Ds. Gedeg, Kec. Gedeg	v			
		RPH Sooko	Ds. Kd. Maling, Kec. Sooko	v			
		RPH Jatrejo	Ds. Dinoyo, Kec. Jatirejo	v			
		ROH	Ds. Gondang, Kec.	v			

		Gondang	Gondang				
		RPH Mojosari	Ds. Ngrame, Kec. Pungging	v			
	Kota Mojokerto	RPH Kta Mojokerto	Jl. Sekarputih	v			
17	Jombang	RPH Jombang	Ds. Candi Mulyo, Kec. Jombang	v			
		RPH Peterongan	Ds. Peterongan, Kec. Peterongan	v			
		RPH Mojoagung	Ds. Miagan, Kec. Mojoagung	v			
		RPH Ploso	Ds. Losari, Kec. Ploso	v			
18	Nganjuk	RPH Nganjuk	Jl. Imam Bonjol 9 nganjuk	v			
		RPH Kertosono	Jl. Supriyadi no. 57 Ds. Kudu Kec. Kertosono	v			
19	Madiun	RPH Madiun	Ds. Mejayan, Kab. Madiun	v			
	Kota Madiun	RPH Kota Madiun	Jl. Mayjend Sungkono I / 30 Madiun	v			
20	Magetan	RPH Magetan	Jl. Samodra Kel. Bulukerto, Kec. Magetan	v			
		RPH Plaosan	Kel. Plaosan, Kec. Plaosan	v			
21	Ngawi	RPH Ngawi	Jl. Supriadi	v			
22	Bojonegoro	RPH Bojonegoro	Jl. Kyai H. Mansyur Kec. Bojonegoro	v	v		
		RPH Sumberrejo	Kec. Sumberrejo	v	v		
		RPH Baureno	Kec. Baureno	v	v		
		RPH Eka Putra Jaya	Ds. Banjarsari Kec. Trucuk	v			
23	Tuban	RPH Tuban	Ds. Sidomulyo, Kec. Tuban	v	v		
		RPH Kecamatan Jatirogo	DESA SUGIHAN	v			
		RPH Kecamatan Tuban	KEL. KUTOREJO, KEL SIDOMUKTI	v	v		
		RPH Kecamatan Rengel	DESA RENDEL	v			
24	Lamongan	RPH Lamongan	Jl. Pahlawan, Sukomulyo, Lamongan	v			v
		RPH Babat	Jl. Petrokimia Ploasan, Babat, Lamongan	v			
		RPH Pucuk	Jl. Raya Pucuk, Lamongan	v			
25	Gresik	RPH Gresik	Jl. Kramat Langon No. 19	v			
26	Bangkalan	RPH Bangkalan	Jl. Raya Bancaran	v			
		RPH Tanah Merah	Jl. Raya Tanah Merah	v			
27	Sampang	RPH Sapang	Jl. Pemuda Baru, Kelurahan Rong Tengah	v			
		RPH Torjun	Ds Torjun, Kecamatan Torjun	v			
		RPH Omben	Ds Rapa Laok, Kecamatan Omben	v			
		RPH Ketapang	Ds Ketapang Daya, Kecamatan Ketapang	v			
		RPH Karang Penang	Ds Karang Penang Oloh, Kec. Karang Penang	v			
		RPH Kedungdung	Ds Moktesareh, Kecamatan Kedungdung	v			
		RPH	Ds Tambelangan,	v			

		Tembelangan	Kecamatan Tembelangan				
28	Pamekasan	RPH Pamekasan	Jl. Jagalan	v			
		RPH Pakong	Ds. Pakong	v			
		RPH Pengantenan	Ds. Pegantenan	v			
		RPH Waru	Ds. Waru Barat	v			
		RPH Palengaan	Ds. Palengaan, Laok	v			
		RPH Banyupelle	Ds Banyupelle Kec Palengaan	v			
		RPH Proppo	Ds Jembringi Kec. Proppo	v			
29	Sumenep	RPH Kota	Ds. Karangpanasan Kec.Kota	v			
		RPH Kec. Manding	Jl. Raya Manding	v			
		RPH Kec. Lenteng	Ds. Lenteng Timur	v			
		RPH Kec. Ganding	Ds. Ketawang Laok	v			
		RPH Kec. Talango	Ds. Talango	v			
36	Kota Surabaya	RPH Pegirian	Jl. Pegirian No. 258	v			
		RPH Kedurus	Jl. Mastrip No. 45	v			
		RPH PT. Surya Jaya	Jl. Banjarsugihan No. 74	v			
37	Kota Batu	RPH Kota Batu	Jl. Dorowati Kel. Sisir Kec. Batu	v			
Note: *) Put a v sign							

Data from the East Java Livestock Service (*Dinas Peternakan Provinsi Jawa Timur*, n.d.)

Table description:

1. The green color is a slaughterhouse that has been certified halal
2. The yellow color is a halal-certified slaughterhouse only for the slaughterer
3. Colorless, not yet halal certified.

The data based on the table above shows that slaughterhouses that have been halal certified are as follows:

1. Ponorogo has 2 (two) slaughterhouses, one of which is halal certified (Jatim, n.d.)
2. In Tulungagung 3 (three) slaughterhouses are not yet halal certified, but the slaughterers are halal certified, so all you have to do is apply for halal certification to BPJPH ('Pemkab Tulungagung Upayakan Seluruh RPH Dapat Sertifikat Halal', 2022)
3. Blitar has 6 (six) slaughterhouses, one of which is halal-certified (*RPH Dimoro Kota Blitar Terima Penghargaan 12 Top Terbaik Inovasi Pelayanan Publik Jatim / Uptd Rumah Potong Hewan, N.D.*)

4. Kediri has 2 (two) slaughterhouses, one of which is halal certified (Farah, 1 C.E.)
5. In Malang 9 (nine) slaughterhouses are halal certified (Ratri, n.d.)
6. Probolinggo has 6 (six) slaughterhouses, all of which are halal certified (Redaksi, n.d.)
7. Pasuruan has 10 (ten) slaughterhouses that are all halal certified (Arifin, 2019)
8. Sidoarjo has 1 (one) slaughterhouse that is halal-certified (SuaraJatimPost, n.d.)
9. Jombang has 4 (four) slaughterhouses, one of which is halal-certified (*JBG - Audit Sertifikasi Halal Rumah Potong Hewan (RPH) Jombang*, n.d.)
10. Madiun has one slaughterhouse that is halal-certified (admin, n.d.)
11. In Ngawi, there is 1 (one) slaughterhouse that has not been halal certified, but the slaughterer has been halal-certified. (Admin, 2020)
12. In Gresik there is one slaughterhouse that is not halal-certified, but the slaughterer is halal-certified. Gresik terdapat satu RPH belum bersertifikat halal, namun juru sembelihnya sudah bersertifikat halal. (Ayyubi, 2022)
13. Certified in Bangkalan, 2 (two) slaughterhouses are not halal certified, but one of the slaughterhouses has a slaughterman who is halal certified. (*Pemkab Bangkalan Bentuk Tim Juru Sembelih Halal*, 2022)
14. The city of Surabaya has 3 (three) slaughterhouses, one of which is halal-certified. (Agency, n.d.-b)
15. Batu City has one slaughterhouse, which is not yet halal certified, but the slaughterer is halal certified. (*RPH Mojorejo, Rumah Potong Dengan Fasilitas Lengkap Di Kota Batu*, n.d.)

From the table above, it shows that the number of RPHs that have been certified halal has not yet reached 50%, but is still 33.7% of the total number of RPHs in East Java, which is 128. This condition can be assumed that the level of readiness is still low,

RPH Readiness as a Strategic Upstream Strengthening Halal Certification in East Java

The readiness of the RPH as a strategic upstream source for strengthening halal certification in East Java can be read from the data above by looking at developments

from year to year. In 2019, a collaboration between stakeholders consisting of the East Java provincial government and the Bank Indonesia Representative Office of East Java Province has been established, planning to develop a halal chain in East Java, especially slaughterhouses for a halal tayyib and clean slaughtering process. Malang City has been chosen, considering it as a creative city, and also because it has a halal center at Brawijaya University (UB). This collaboration needs to be carried out, considering the minimal number of halal slaughterers, as has been researched by Achmad Rosidi, that there is a lack of halal slaughterers, so a Halal Slaughterers Association (JULEHA) is needed. However, many activities were postponed due to the outbreak of the coronavirus in the middle of 2019 and then it became a pandemic.

The pandemic continued to spread until 2020 became the peak of the pandemic which claimed many victims, causing this year to stop various activities, including in this case strengthening halal certification, especially activities at slaughterhouses. And this pandemic will continue until 2021 but it is decreasing, and strengthening halal certification in slaughterhouses is a discussion in 2021 by KNEKS regarding the weak value chain in the Indonesian halal industry being one of the obstacles faced, even though slaughterhouses are an important upstream part of the halal value chain. Muhammad Sayuti et al in the results of their research have contributed solutions to the orderly implementation of halal regulations on slaughterhouse logistics with measurable monitoring with the necessary checklists.

KNEKS also initiated a halal slaughterhouse modernization program because it saw that the condition of slaughterhouses in Indonesia still needed improvements in terms of facilities, resources, and governance. However, there are already abattoirs that utilize technology in their production processes and obtain halal certification and a Veterinary Control Number (NKV) from the Animal Husbandry Service as halal and hygienic controls so that the quality and balance of availability of basic ingredients are maintained. So the traceability of the halal value chain for meat can provide added value. The halal slaughterhouse modernization program is an institutional force that regulates the halal meat supply chain. {Citation}

This good institutional policy will certainly make the slaughterhouses in East Java more organized in terms of management and distribution, however, the response of

small and medium industries (IKM) which mostly use meat in their products is still very poor, as has been researched. by Izzah Illiyyina and Arimurti Kriswibowo. Therefore, synergy with related parties is very important and must be established to make slaughterhouses halal in East Java, which is a national food center.

Cohesion and synergy between various parties are the main keys to realizing halal slaughterhouses in East Java, therefore making halal slaughterhouses is a shared responsibility between the community, SMEs, slaughterhouses, and the government to balance policy, response, and implementation.

Conclusion

Since the enactment of Law No. 33 of 2014 concerning Halal Product Guarantees from 2019 to 2022, especially for food products, in East Java, it has not been realized on a massive scale, of course, this is also influenced by the existence of many slaughterhouses which still do not have halal certification. And if you look at it from 2019 to 2022, the readiness of the RPH as a strategic upstream source for strengthening halal certification in East Java is still not fully prepared or can be said to be still relatively low, of course, because there are obstacles that must be immediately minimized. What is recommended in this research is the realization of synergistic cooperation between the relevant parties, namely: the community, SMEs, abattoirs, and the government in realizing halal abattoirs in East Java.

REFERENCES

Ada 1.644 Rumah Pemotongan Hewan di Indonesia pada 2022, Ini Sebaran Wilayahnya / Databoks. (n.d.). Retrieved 13 January 2024, from <https://databoks.katadata.co.id/datapublish/2022/11/16/ada-1644-rumah-pemotongan-hewan-di-indonesia-pada-2022-ini-sebaran-wilayahnya>

admin. (n.d.). *Penerbitan Sertifikasi Halal bagi Rumah Potong Hewan dan Unggas/Ayam – DKPP Kota Madiun*. Retrieved 30 October 2022, from <https://disperta.madiunkota.go.id/2021/02/10/penerbitan-sertifikasi-halal-bagi-rumah-potong-hewan-dan-unggas-ayam/>

- Admin. (2020, November 24). *RPH-R NGAWI SUDAH BER NKV*. MAJALAH SPEKTROEM. <https://spektroem.com/rph-r-ngawi-sudah-ber-nkv/>
- Agency, A. N. (n.d.-a). *RPH dan RPU adalah hulu strategis kehalalan suatu produk*. Antara News Jawa Timur. Retrieved 21 October 2022, from <https://jatim.antaranews.com/berita/597201/rph-dan-rpu-adalah-hulu-strategis-kehalalan-suatu-produk>
- Agency, A. N. (n.d.-b). *Sertifikasi Halal di RPH Surabaya Sempat Masuk Titik Kritis*. Antara News Jawa Timur. Retrieved 31 October 2022, from <https://jatim.antaranews.com/berita/269164/sertifikasi-halal-di-rph-surabaya-sempat-masuk-titik-kritis>
- Albi Anggito, Johan Setiawan. (2018). *Penelitian Kualitatif* (p. 166). CV. Jejak.
- Anwar—Respon Pelaku Usaha RPA terhadap Sertifikasi Halal.pdf*. (n.d.).
- Arifin, J. (2019, March 8). Banyak RPH di Kab Pasuruan yang Tak Kantongi NKV. *Radar Bromo*. <https://radarbromo.jawapos.com/daerah/08/03/2019/banyak-rph-di-kab-pasuruan-yang-tak-kantongi-nkv/>
- Ayyubi, S. A. (2022, February 9). Dispartan Gresik Percepat Sertifikat Juru Sembelih Hasilkan Produk RPH Halal. *Javasatu*. <https://jvasatu.com/daerah/dispartan-gresik-percepat-sertifikat-juru-sembelih-hasilkan-produk-rph-halal/>
- Badan Penyelenggara Jaminan Produk Halal*. (n.d.). Retrieved 26 October 2022, from <http://www.halal.go.id/layanan/sertifikasi>
- Buku Modernisasi RPH Halal.pdf*. (n.d.).
- Dinas Peternakan Provinsi Jawa Timur*. (n.d.). Retrieved 21 October 2022, from <https://disnak.jatimprov.go.id/web/>
- Farah, A. (1 C.E., November 30). Tiga RPH di Jatim Miliki Sertifikat Halal. *Hidayatullah.Com*. <https://www.hidayatullah.com/berita/nasional/read/2011/11/08/54407/tiga-rph-di-jatim-miliki-sertifikat-halal.html>
- Illiyyina, I., & Kriswibowo, A. (2022). Respon Industri Kecil Menengah (IKM) di Provinsi Jawa Timur Pada Kebijakan Sertifikasi Halal. *Jurnal Ilmiah Universitas Batanghari Jambi*, 22(2), 1183. <https://doi.org/10.33087/jiubj.v22i2.2378>
- Jatim, T. (n.d.). *Lama Mangkrak, RPH Ponorogo Akhirnya Diaktifkan*. TIMES Jatim. Retrieved 29 October 2022, from <https://jatim.times.co.id/news/berita/njyc1qazlt/Lama-Mangkrak-RPH-Ponorogo-Akhirnya-Diaktifkan>
- JBG - Audit Sertifikasi Halal Rumah Potong Hewan (RPH) Jombang*. (n.d.). Portal Resmi Pemerintah Kabupaten Jombang. Retrieved 30 October 2022, from <https://jombangkab.go.id/opd/peternakan/berita/audit-sertifikasi-halal-rumah-potong-hewan-rph-jombang>

- Kominfo, P. (n.d.). *UU No. 33/2014: Pemerintah Harus Bentuk Badan Penyelenggara Jaminan Produk Halal*. Website Resmi Kementerian Komunikasi Dan Informatika RI. Retrieved 26 October 2022, from <http://content/detail/4240/uu-no-332014-pemerintah-harus-bentuk-badan-penyelenggara-jaminan-produk-halal/0/berita>
- Masruroh, N., & Shahrin, A. A. (2022). *Kontestasi Agama, Pasar dan Negara*. 20.
- Mestika Zed. (2008). *Metode Penelitian Kepustakaan* (1st ed.). Yayasan Obor Indonesia.
- Modernisasi Rumah Potongan Hewan (RPH) Halal di Indonesia*. (n.d.). Komite Nasional Ekonomi Dan Keuangan Syariah. Retrieved 23 October 2022, from <https://kneks.go.id/berita/419/modernisasi-rumah-potongan-hewan-rph-halal-di-indonesia?category=1>
- Mulyono, A. (n.d.). *Juru Penyambelian Halal (JULEHA) di Indonesia*. 260.
- Pemkab Bangkalan Bentuk Tim Juru Sembelih Halal*. (2022, July 3). Republika Online. <https://republika.co.id/share/refy86457>
- Pemkab Tulungagung Upayakan Seluruh RPH Dapat Sertifikat Halal*. (2022, July 1). *Radartulungagung / Semakin Dekat Dengan Pembaca*. <https://radartulungagung.co.id/pemkab-tulungagung-upayakan-seluruh-rph-dapat-sertifikat-halal/>
- Pemprov Jatim Gagas Rumah Potong Hewan Halal*. (n.d.). Retrieved 23 October 2022, from <https://www.jawapos.com/surabaya/29/08/2019/pemprov-jatim-gagas-rumah-potong-hewan-halal/>
- Ratri, N. (n.d.). *Serius Kembangkan Usaha, RPH Kota Malang Kejar Sertifikasi Halal BPJPH*. Malang TIMES. Retrieved 30 October 2022, from <https://www.malangtimes.com/baca/43069/20190821/201500/serius-kembangkan-usaha-rph-kota-malang-kejar-sertifikasi-halal-bpjph>
- Redaksi. (n.d.). *RPH Gading dan Besuk Terima Sertifikat Halal – Portal Kabupaten Probolinggo*. Retrieved 30 October 2022, from <https://probolinggokab.go.id/rph-gading-dan-besuk-terima-sertifikat-halal/>
- RPH Dimoro Kota Blitar Terima Penghargaan 12 Top Terbaik Inovasi Pelayanan Publik Jatim | UPTD Rumah Potong Hewan*. (n.d.). Retrieved 30 October 2022, from <http://rph.blitarkota.go.id/id/berita-opd/rph-dimoro-kota-blitar-terima-penghargaan-12-top-terbaik-inovasi-pelayanan-publik-jatim>
- RPH Mojorejo, Rumah Potong Dengan Fasilitas Lengkap Di Kota Batu*. (n.d.). Retrieved 31 October 2022, from <https://tabloidsinartani.com/detail/indeks/ternak/19667-RPH-Mojorejo-Rumah-Potong-Dengan-Fasilitas-Lengkap-Di-Kota-Batu>
- Sayuti, M., Purnamasari, A., & Pratiwi, A. I. (2021). Penerapan Halal Logistik pada Distribusi Daging Sapi di Kabupaten Karawang. *Jurnal Integrasi Sistem industri*, 8, 11.

- Sherwani, M., Ali, A., Ali, A., & Hussain, S. (2018). Determinants of halal meat consumption in Germany. *Journal of Islamic Marketing*, 9(4), 863–883. <https://doi.org/10.1108/JIMA-01-2018-0009>
- SuaraJatimPost. (n.d.). *Bupati Sidoarjo Beberkan Keunggulan RPH Krian* [Service]. news. Retrieved 30 October 2022, from <https://www.suarajatimpost.com/pemerintahan/bupati-sidoarjo-beberkan-keunggulan-rph-krian->
- Tim Penyusun. (2022). *Kerangka Modernisasi Rumah Potong Hewan Halal*. Komite Nasional Ekonomi dan Keuangan Syariah.
- Wahyudin Darmalaksana. (2020). *Cara Menulis Proposal*. Fakultas ushuluddin UIN Sunan Gunung Djati.
- Zulfakar, M. H., Chan, C., & Jie, F. (2018). Institutional forces on Australian halal meat supply chain (AHMSC) operations. *Journal of Islamic Marketing*, 9(1), 80–98. <https://doi.org/10.1108/JIMA-01-2016-0005>